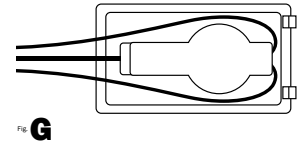
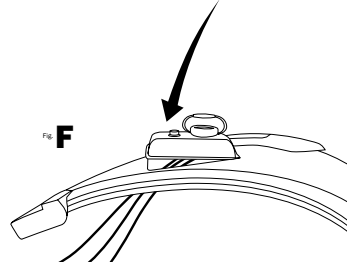
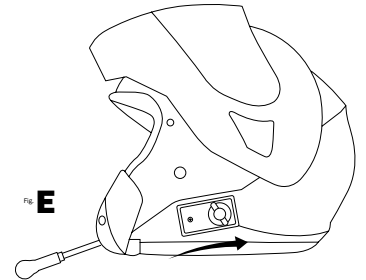
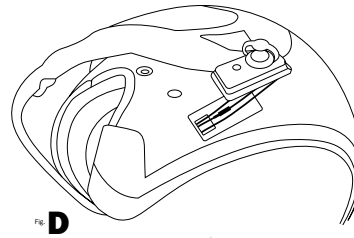
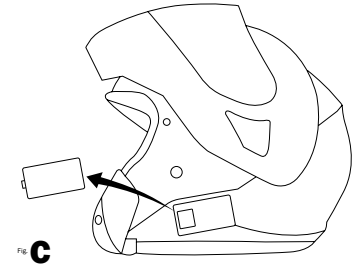
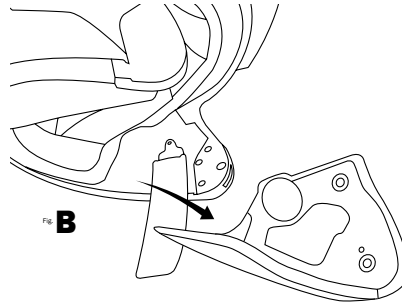
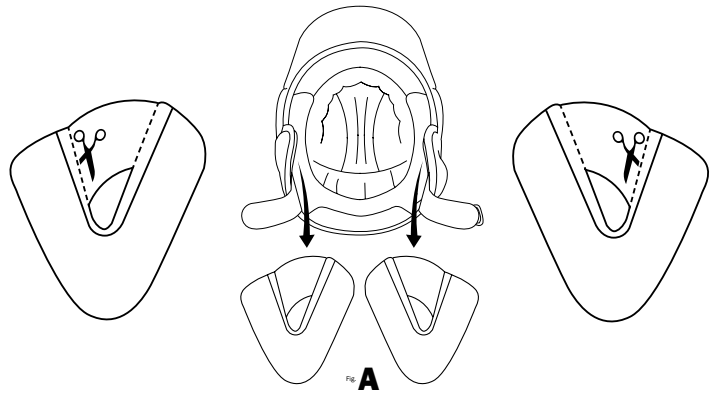


## J&M's Integrated Helmet Headset for the HJC Symax III/IS-MAX BT Installation Instructions

- 1) Remove completely both left and right side interior cheek pads. **(Figure A.)** (Please consult your HJC owner's manual for proper cheek pad removal procedures.)
- 2) Using a pair of scissors, cut and remove the mesh material from the ear-pocket area of both the left and right interior cheek pads. **(Figure A.)**
- 3) Remove the left side styrofoam cheek pad base. **(Figure B.)**
- 4) By lifting with your thumbnail from the outside, carefully remove the small cover from the left side of the helmet. **(Figure C.)**
- 5) Install the J&M sidecover assembly by first routing the 2 longer speaker wires and the shorter microphone lead through the square opening at the front of the recessed area. **(Figure D.)** Then finish installing the J&M sidecover assembly onto the helmet by first inserting the rear of the assembly into the helmet and then press firmly on the front of the assembly to snap it into place. **(Figure E. and F.)** Be sure the speaker wires are positioned inside the sidecover assembly as shown. **(Figure G.)**
- 6) After first removing the original short screw, using the provided clamp, longer screw, and washer, secure the boom mike by inserting the screw through the clamp and into the threaded hole. **(Figure H. and I.)** (DO NOT TIGHTEN)
- 7) Adjust boom mike positioning so that the microphone lines up with the center of the wearers mouth. **(Figure J.)** Finish tightening screw to secure the boom mike in place. (DO NOT OVER TIGHTEN)
- 8) Plug the connector on the microphone into the microphone lead from the sidecover assembly.



### WARRANTY REGISTRATION FORM

Please fill out this card completely and mail it immediately after purchase. Please be sure that your zip code and serial number (if applicable) are legible. This will help us to serve you better.

(PLEASE PRINT)

Name \_\_\_\_\_

Address \_\_\_\_\_

City \_\_\_\_\_ State \_\_\_\_\_ Zip \_\_\_\_\_

Motorcycle  Other  E-mail \_\_\_\_\_

Make \_\_\_\_\_ Model \_\_\_\_\_ Year \_\_\_\_\_

Product part number \_\_\_\_\_

Serial number (if applicable) \_\_\_\_\_

Date of purchase \_\_\_\_\_

Name of dealer it was purchased from \_\_\_\_\_



Mail to: J&M Corporation  
1415 S. Cherry Avenue  
Tucson, AZ 85713-1997

### WARRANTY AND REPAIR INFORMATION

**TWO YEAR LIMITED WARRANTY** In order to facilitate the servicing of this warranty, the Warranty Registration Form should be filled out and returned within 10 days of the date of purchase. However, return of the Warranty Registration Form is not a precondition of this warranty, and this Warranty will be observed by **J&M CORPORATION** whether or not the Warranty Registration Form is returned, on the condition that other satisfactory evidence of the date of the original purchase is provided to **J&M CORPORATION**.

**WHO PROVIDES THE WARRANTY?** This warranty is provided by **J&M CORPORATION**.

**WHO IS PROTECTED?** This warranty is extended only to the original owner of this **J&M CORPORATION** product and may not be transferred or assigned.

**WHAT IS COVERED AND HOW LONG?** This warranty covers all defects in material or workmanship of our product for a period of 2 years from date of original retail purchase. At its option, **J&M CORPORATION** will repair or replace any defective part(s) or equipment.

The provisions of the warranty shall not apply to any unit which has been subjected to misuse, neglect, incorrect mechanical or electrical installation, unauthorized modifications, accident, nor to units which have been repaired or altered outside of our factory.

**PROCEDURE FOR OBTAINING PERFORMANCE OF WARRANTY** In the event that the product does not conform to this warranty, the product should be shipped prepaid to the **J&M CORPORATION** service facility. Transportation charges, insurance fees, and labor costs for shipment, removal, or reinstallation of our product are not covered by this warranty. Loss or damage in shipment is the sole responsibility of the freight carrier.

**FOR YOUR INFORMATION** Repair as provided under this warranty is the exclusive remedy of the consumer. **J&M CORPORATION** shall not be liable for any incidental or consequential damages or for breach of any express or implied warranty on this product. Except to the extent prohibited by applicable law, any implied warranty of merchantability or fitness for a particular purpose on this product is limited in duration to the duration of the warranty. Some states do not allow the exclusion or limitation of incidental or consequential damages, or allow limitations on how long an implied warranty lasts, so the above limitations or exclusion may not apply to you. This warranty gives you specific legal rights which vary from state to state.

**J&M CORPORATION** reserves the right to make changes in design and to make improvements in its products without the obligation to incorporate the changes or improvements in any of its previously manufactured products.

**J&M CORPORATION** has not authorized anyone to make representations or warranties other than the warranty contained herein.

The above warranty is effective for all products manufactured after 10/01/86.

**NON-WARRANTY REPAIR RATES** **J&M CORPORATION** reserves the right to change the labor repair rates without prior notice. At the time of this printing the out-of-warranty repair is \$40 per hour for labor only. However, the customer is advised to verify the current rate when he/she calls customer service to obtain the return authorization number.

**FACTORY SERVICE ADDRESS** J&M Corporation, Tucson, Arizona, U.S.A. Tel: 1-800-358-0881 audio@jmc Corp. www.jmc Corp.

9) Re-install the left side cheek pad base into the helmet and then install the provided Velcro pads onto both the left and right cheek pad bases. **(Figure K.)**

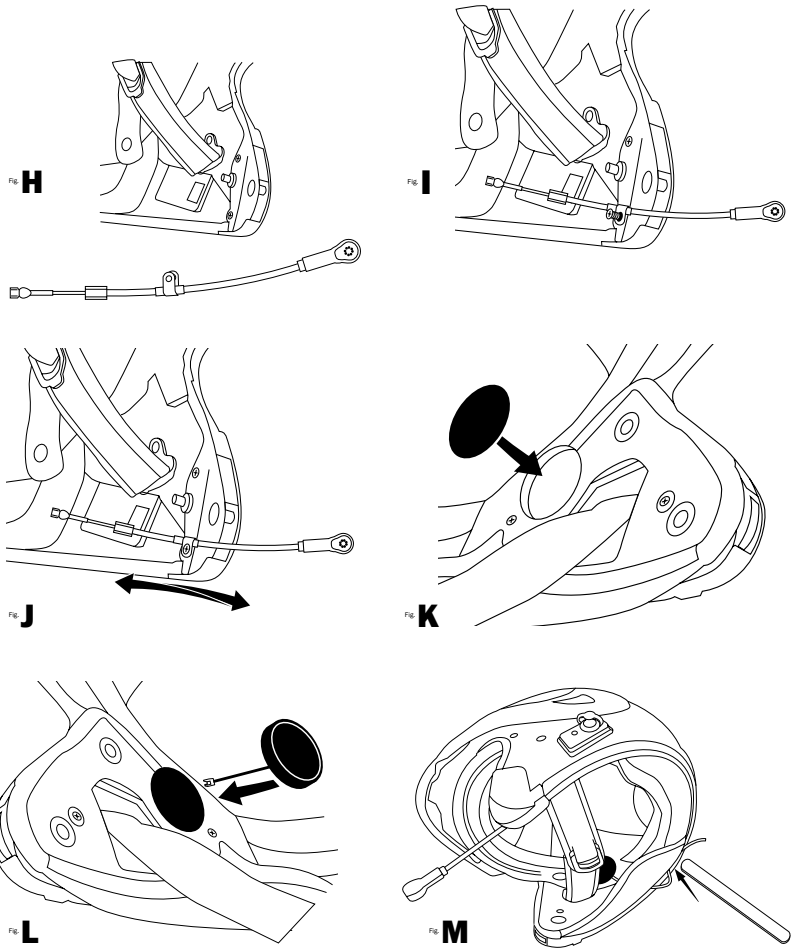
10) Place one of the speakers on the Velcro pad in the right side of the helmet. Plug the wire from this speaker into the longer of the two wires from the sidecover assembly. Tuck the remainder of the wire between the padding and the helmet shell with the provided wooden tool. **(Figure L. and M.)**

11) Duplicate step 9 for the left side speaker installation, using the shorter of the two speaker wires from the sidecover assembly. Re-install left and right cheek pads into the helmet.

12) Pull the small or medium foam windssock over the microphone, so that the contoured portion of the foam is directly over the position on the microphone that is spoken into.

NOTES: When plugging in the right angle hook-up cord, it may be necessary, especially the first time, to press a little harder than usual (do not twist) to make sure that the connection is fully made.

When using your intercom system, it is important to turn the intercom volume level high enough for comfortable conversation, but not any higher. Unnecessarily high intercom volume levels will only increase the unwanted wind and background noise that you may experience.



• **Thank you** for the confidence you have shown in J & M by purchasing one of our innovative products. It will give you many hours of riding pleasure. If you have any questions during installation or require more information about this product, you may call our Customer Service Department (English only, please) at (800) 358-0881, Monday through Friday, 8:00 a.m. to 5:00 p.m. Mountain Standard Time, U.S.A.

<b>Audio Specifications</b>	
Speaker impedance	50 $\Omega$ $\pm$ 10%
Microphone impedance	250 $\Omega$ $\pm$ 10%

Please complete  
WARRANTY REGISTRATION FORM  
on the reverse side and send to J&M Corporation



**J&M Corporation**  
Tucson, Arizona, U.S.A.  
Tel. 1-800-358-0881  
www.jmcorp.com  
audio@jmcorp.com